

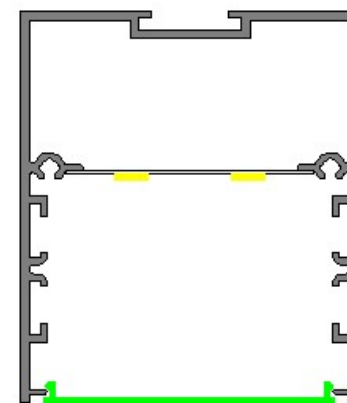




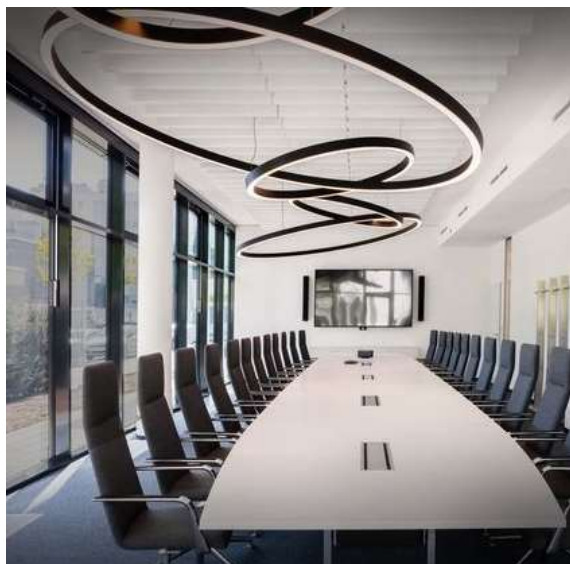
Simple---simple design, elegant appearance

Flexible and feasible---suitable for various applications

Durable---aluminum extrusion + opal PMMA / PC diffusers

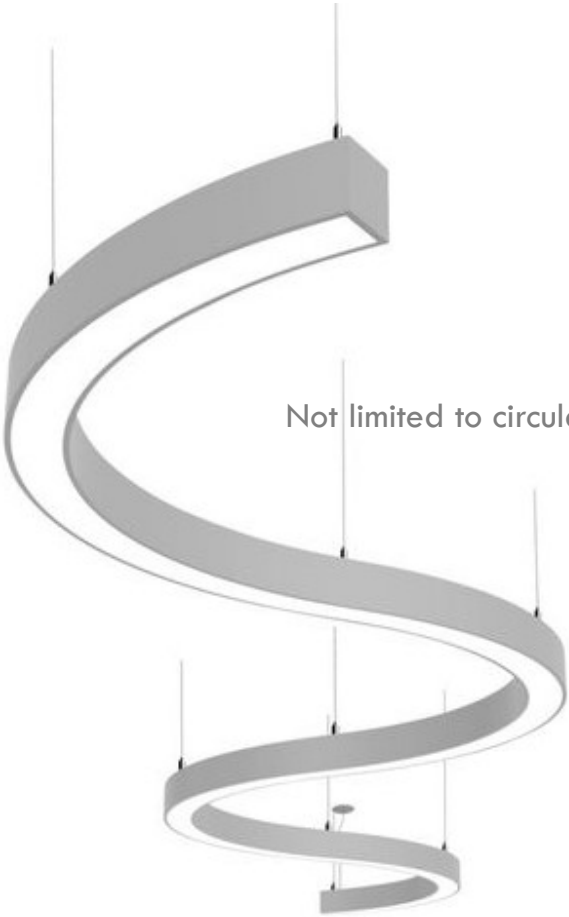


Emotional---white lights + DALI + RGB + ...



- Pendant
- Surface mounted
- Recessed (with trim & trimless)

- Customized diameter



Not limited to circular and oval...






Spot lights modules,
not limited to opal diffuser



RGB+DALI

Not limited to warm white & cool white...

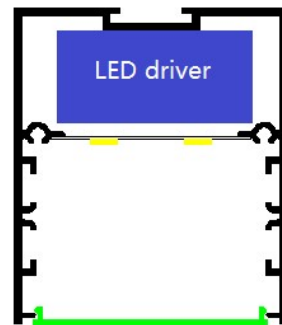


| image | description | diameter mm | driving current mA | system wattage w | system lumen output lm |
|--|--|----------------|--------------------------|------------------------|------------------------------|
|  | <p>LED circular ring light</p> <p>aluminum profile opal PMMA diffuser</p> <p>pendant surface mounted recessed</p> <p>3000k/4000k</p> <p>white/black/silver</p> | | | | |



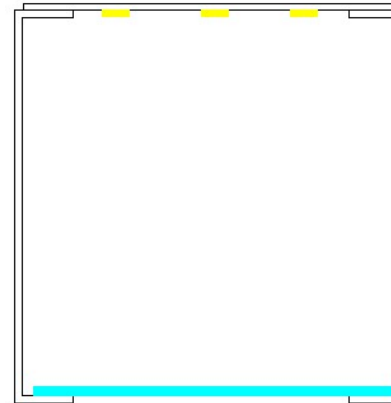
Why our products deserve your purchasing?

Reason 1: More reasonable structure



opal diffuser
clipped-in solution

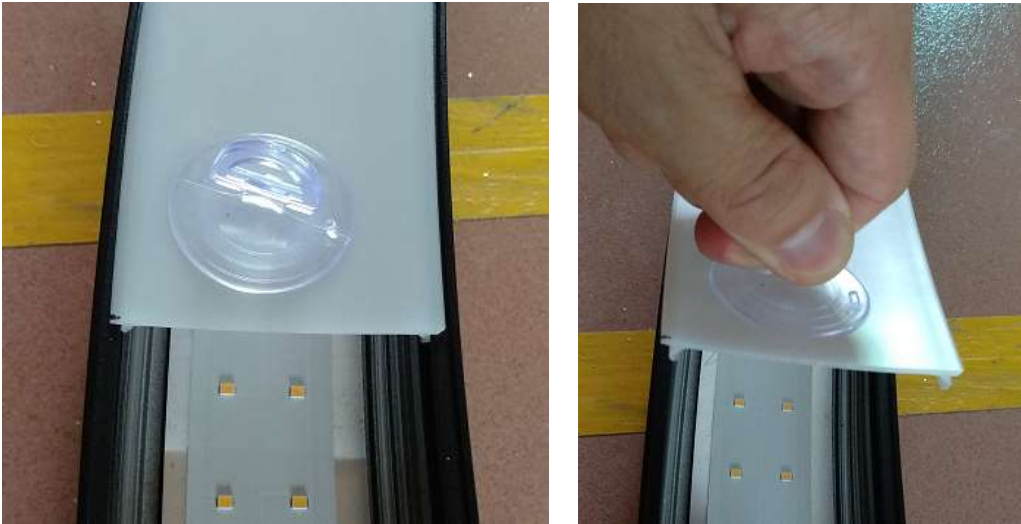
With our solution, when you need to replace the light source, you just need simply use the air-sucker to take out the diffuser, **this helps you save a lot of time and labor costs.**



sliding diffuser into profile
(competitors' solution)

In this solution, before you change the light source, you have to completely dis-assemble the lighting fixture completely, too complicated and labor costs are too high.

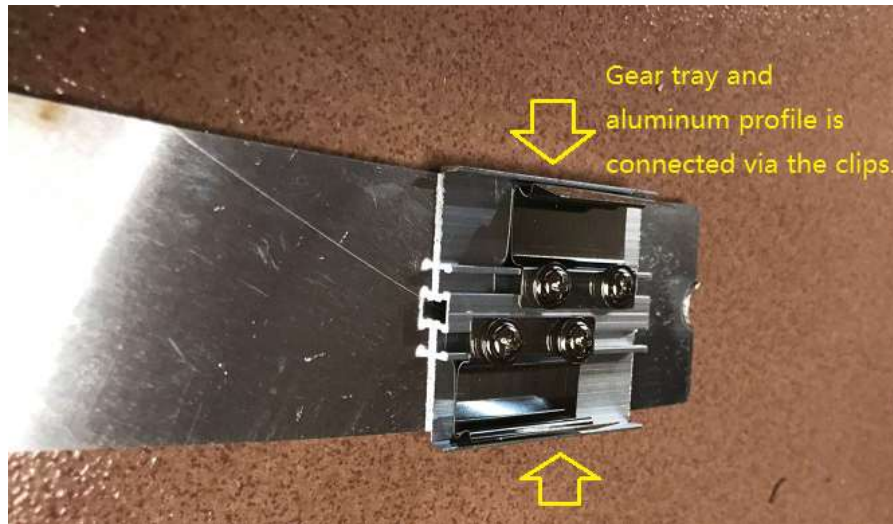
See images below:



Reason 2: curved LED modules, mounted onto gear tray:

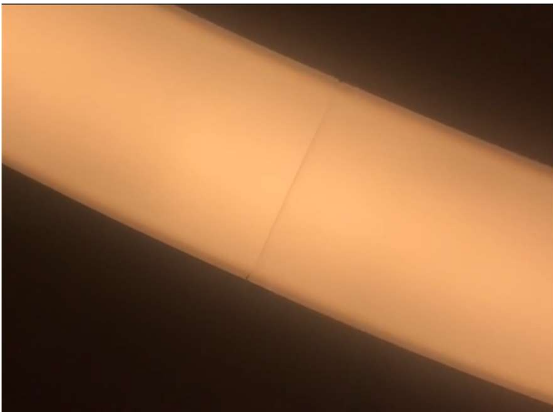


Reason 3: Gear tray is easy to install onto and convenient to take out from aluminum extrusion, at the advantage of special clips as below:



Reason 4: Gaps between extrusions, and gaps between diffusers, are minimized:





Reason 5: Not only ring and oval designs, but also for your creative ideas, in combination of linear straight and spot light applications:



we are manufacturer,

working with lighting designers, architects, interior designers, etc

business oriented by projects involving customized linear lighting systems

with straight and curved designs.

www.super-lightings.com

your lighting partner

Vincent Shum

Vincent@super-lightings.com